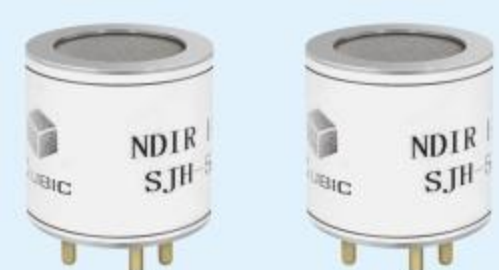


# 20 YEARS Methane (CH<sub>4</sub>) Emission Monitoring Technology



## Methane (CH<sub>4</sub>) Gas Sensor

▪ **NDIR**  
Non-Dispersive Infrared



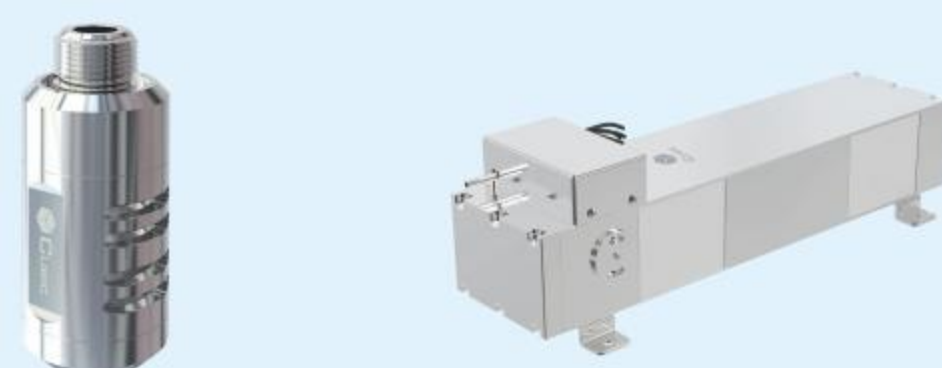
Miniature 4 Series Super Low Power Methane Gas Sensor

Model	SJH-5B-SL
Measurement Range	0~5%Vol
Accuracy	0~1%: $\pm 0.06\%$ Vol; 1%~100%: $\pm 6\%$ of reading
Working Current	1mA (continuous mode)
Working Condition	-40°C~70°C

**Feature**

- Matrix calibration to ensure superior accuracy
- Dual beam design with excellent long term stability
- Super low power at micro amp level

▪ **TDLAS**  
Tunable Diode Laser Absorption Spectroscopy



LEL Level Methane Gas Sensor | PPM Level Methane Gas Sensor

Model	Gasboard-2501	Gasboard-2502
Measurement Range	0~5%Vol	0~1000ppm
Accuracy	$\pm 5\%$ LEL	$\pm 5\text{ppm} + 2\%$ of reading
Minimal Detection Limit	-	1ppm
Working Condition	-25°C~55°C	-20°C~60°C

**Feature**

- Multiple ranges available to adapt different leak scenarios
- Super low detection limit with high resolution
- Outstanding methane selectivity with robust anti-cross interference

## Methane (CH<sub>4</sub>) Emission Monitoring System

▪ **Laser Raman**  
Laser Raman Spectroscopy



Laser Raman Multi-Gas Analyzer

**Multi-Gas Calorific Value Analysis System**

CH<sub>4</sub> CO CO<sub>2</sub> C<sub>2</sub>H<sub>2</sub> C<sub>2</sub>H<sub>4</sub> C<sub>2</sub>H<sub>6</sub> C<sub>3</sub>H<sub>8</sub> H<sub>2</sub>O H<sub>2</sub>S NH<sub>3</sub> iC<sub>4</sub> nC<sub>4</sub>

**Feature**

- Online continuous real-time measurement
- Natural gas and associated gas calorific value analysis
- Ultra-fast response time
- Fingerprint technology with strong anti-interference ability
- Replacement of gas chromatography (GC), mass spectrometry (MS)

▪ **TDLAS**  
Tunable Diode Laser Absorption Spectroscopy



**Ambient Air Continuous Emission Monitoring System**

CH<sub>4</sub> O<sub>2</sub> H<sub>2</sub> H<sub>2</sub>O NH<sub>3</sub> iC<sub>4</sub> nC<sub>4</sub>

**Feature**

- Quantitative continuous methane emission measurement
- Reliable performance at hazard outdoor environment
- Supporting dynamic power consumption management
- Integrated ultrasonic wind speed and direction sensor unit
- Smart data communication, computing, analytics

## Oil & Gas Exploration/Production

### UPSTREAM

- OFFSHORE PLATFORM
- ONSHORE PUMP JACK



## Transport & Storage

### MIDSTREAM

- PROCESS & STORAGE
- PIPELINE TRANSFER



## Product Preparation & Usage

### DOWNSTREAM

- REFINING
- DISTRIBUTION & RETAIL



Environmental Emission

Safety Monitoring

Production Optimization